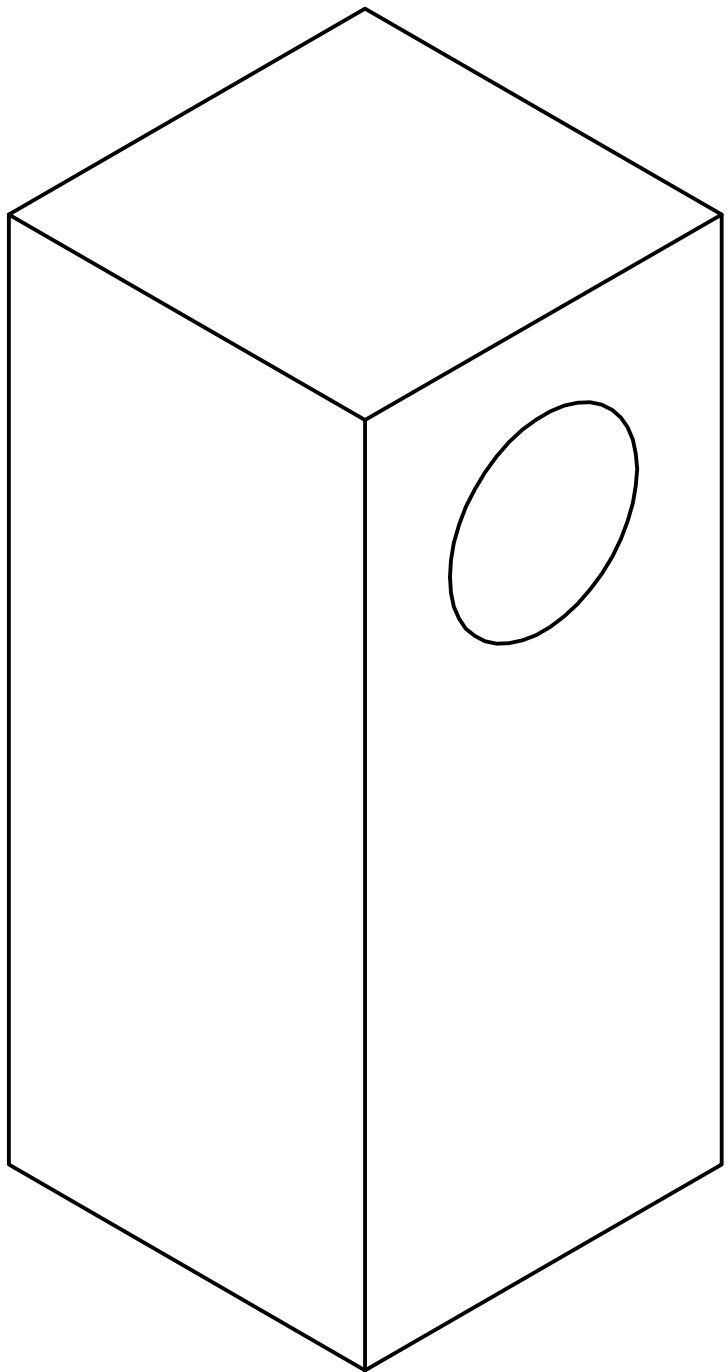
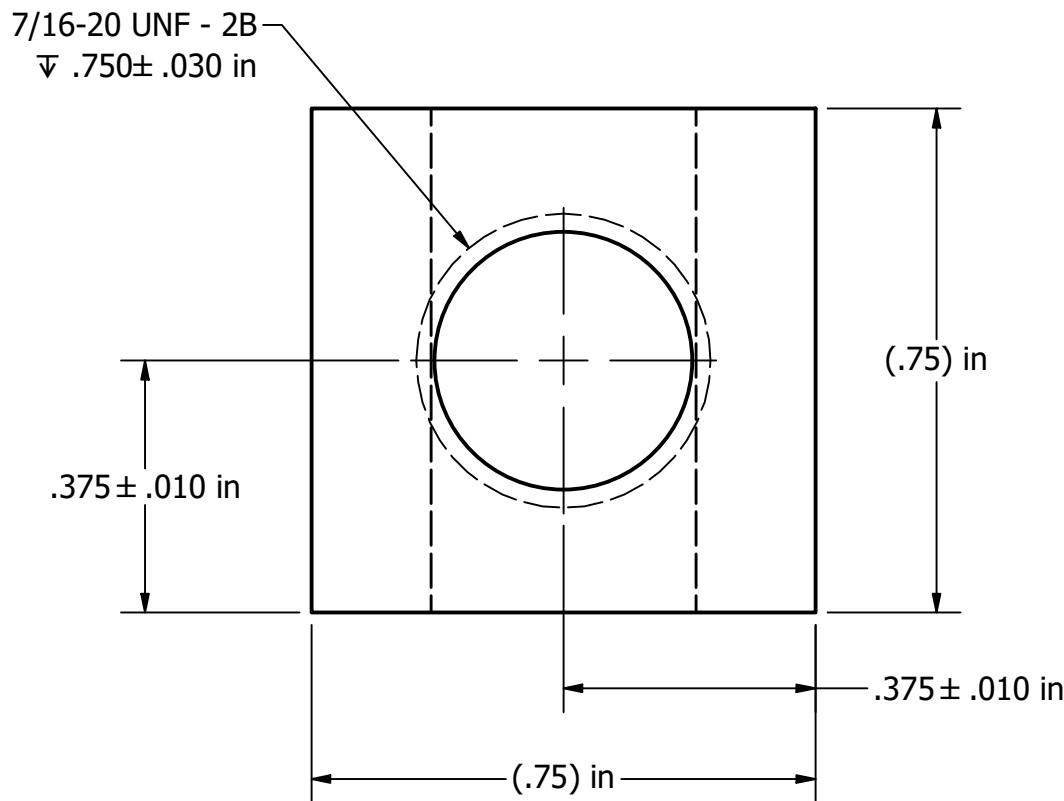
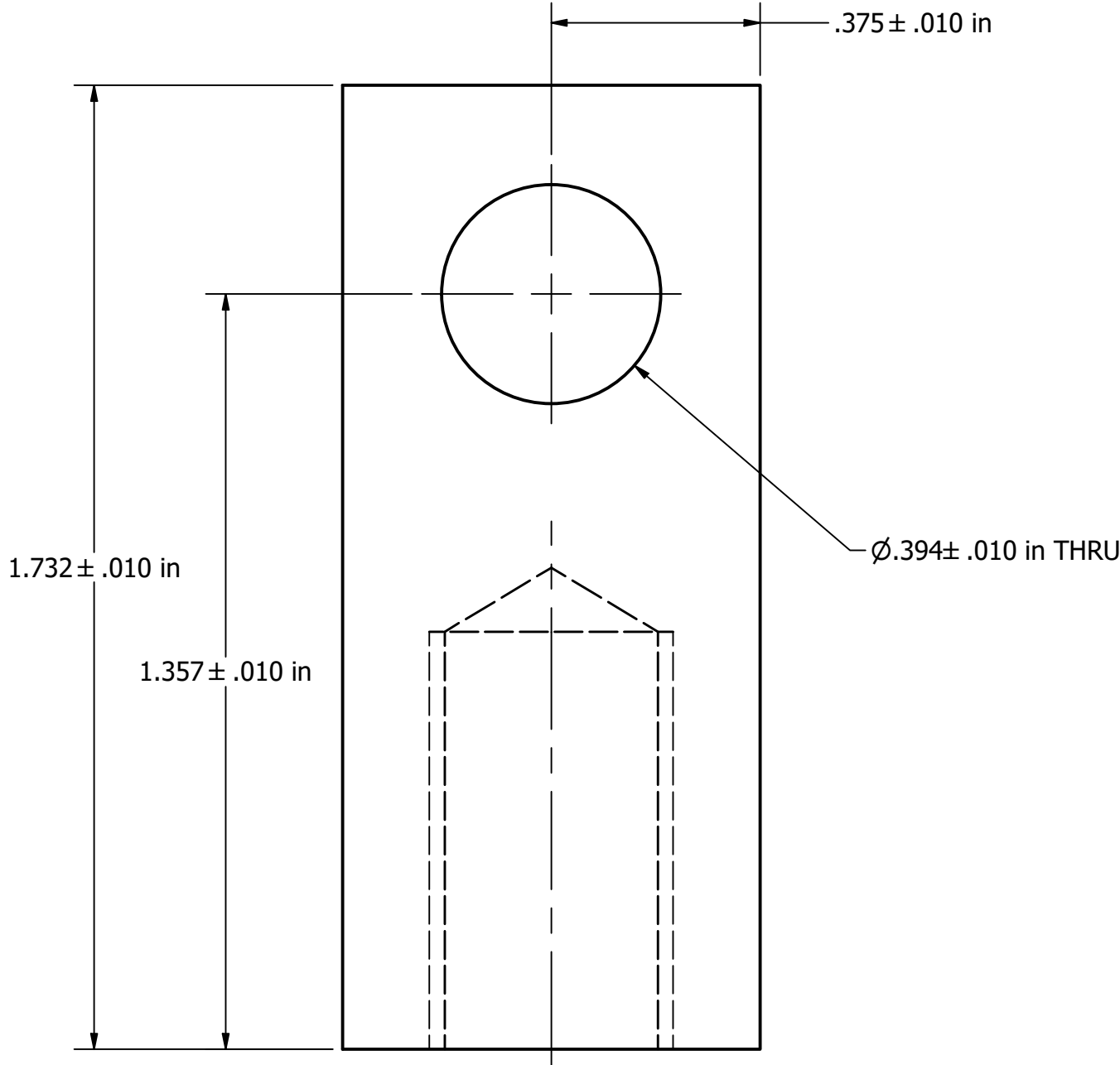

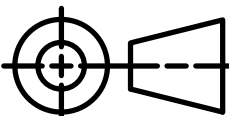


- NOTES:
- FOR COMPLETE PRODUCT DEFINITION, THIS DRAWING GRAPHICS SHEET SHALL BE USED IN CONJUNCTION WITH ITS ASSOCIATED MODEL.
  - DIGITAL PRODUCT DEFINITION SHALL BE IN ACCORDANCE WITH ASME Y14.41-2019.
  - QUERIED MODEL VALUES OF FEATURE(S) SHALL BE INTERPRETED AS BASIC UNLESS OTHERWISE DIMENSIONALLY SPECIFIED IN THE DATA SET.
  - DIMENSIONS ENCLOSED IN PARENTHESIS ARE REFERENCE DIMENSIONS, THIS IS AUXILIARY INFORMATION AND DOES NOT GOVERN PRODUCTION OR INSPECTION OPERATIONS.
  - MATERIAL: 3/4" SQUARE STEEL BAR STOCK



REVISION HISTORY				
REV	RAD	DESCRIPTION	DATE	APPROVED
A	-	INITIAL RELEASE	6/24/2024	MV

UNLESS OTHERWISE SPECIFIED DIMENSIONS ARE IN MILLIMETERS INTERPRET DIMENSIONS AND TOLERANCES PER ASME Y14.5-2018	AUTHOR	DATE	<div></div> <div>1401 W STANFORD AVE ENGLEWOOD, CO 80110 P: (800) 442-7628 F: (303) 781-2683 E: info@garmat.com</div>					
	Esteban.Loera	6/24/2024						
	CHECKED BY	DATE						
	MV	9/18/2024						
THIRD ANGLE PROJECTION	ENG APPROVAL	DATE	DESCRIPTION  CLEVIS, FEMALE ROD END, 7/16"-20, 3/8" ID, SQUARE, STEEL, RAW FINISH					
	MV	9/18/2024						
	MFG APPROVAL	DATE				SIZE DWG NO REV C 1-CLVS-FR-.438-20-0.375-ST-SQ A		