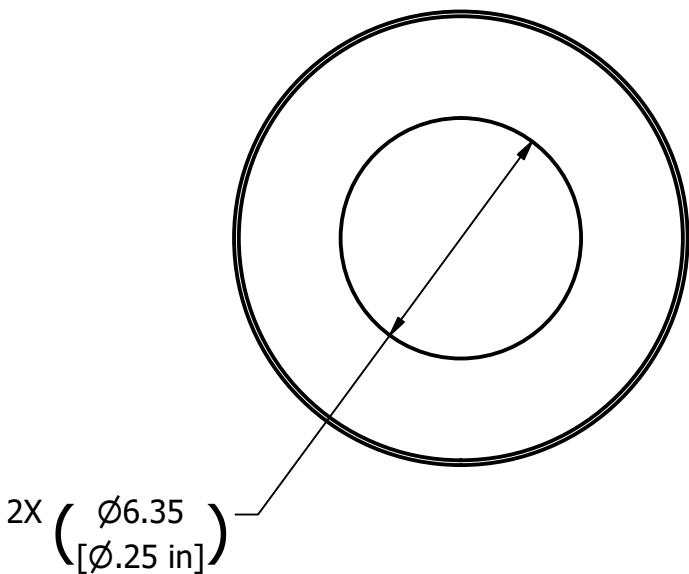
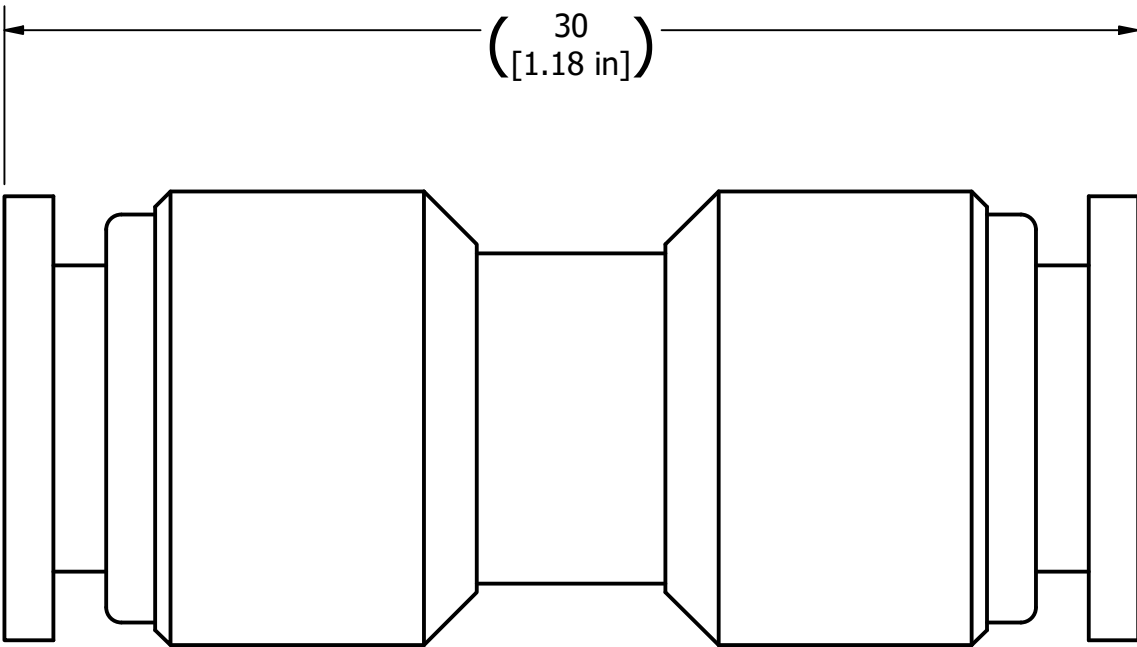
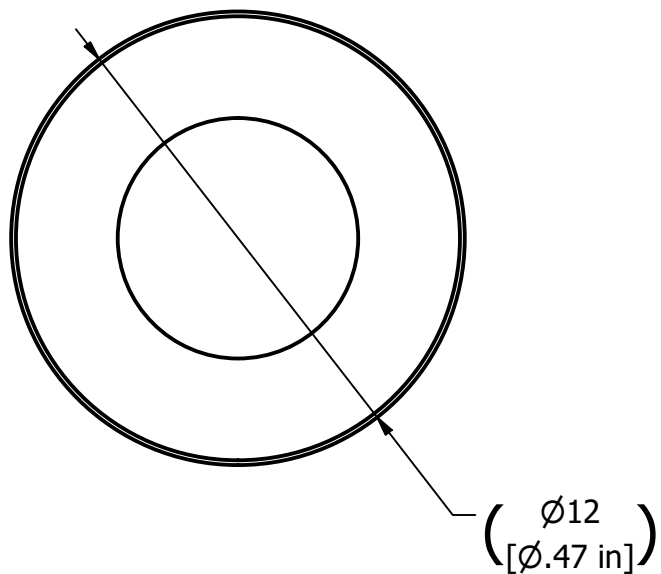
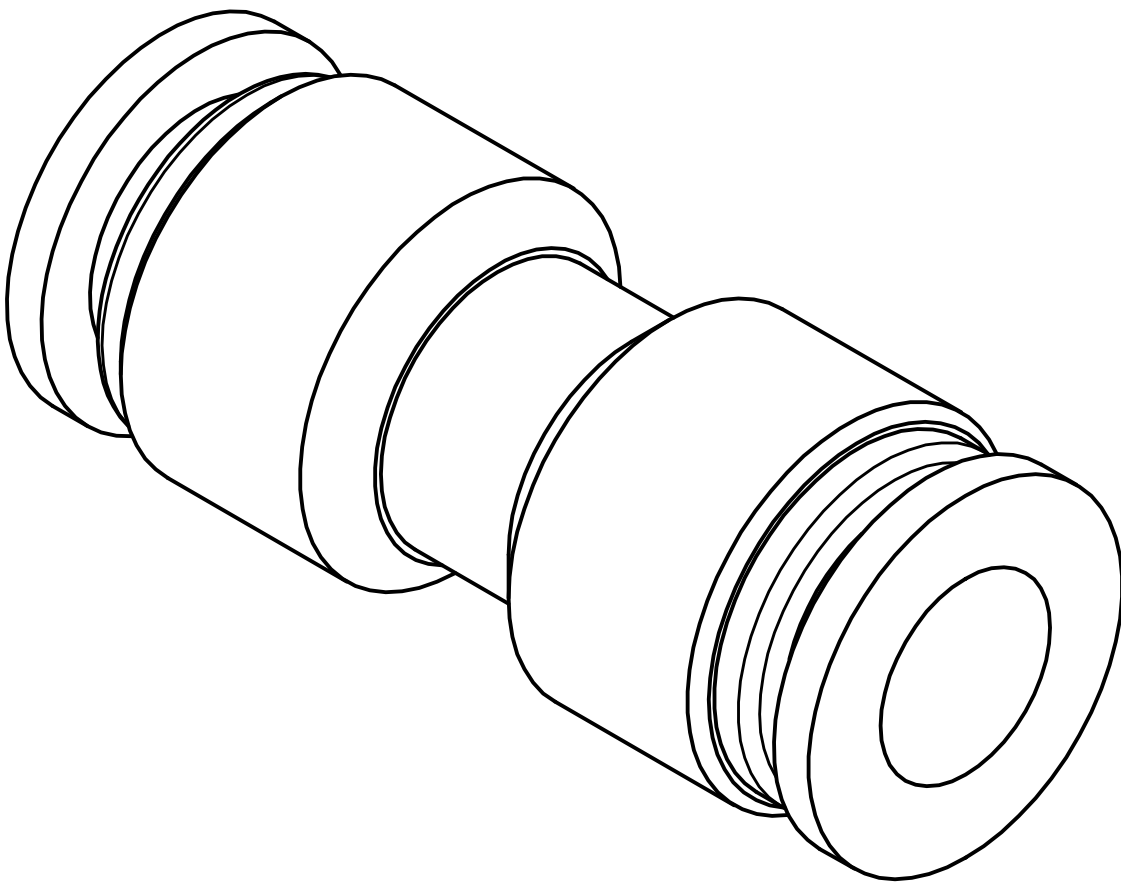

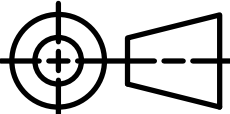


- NOTES:
- DIMENSIONS ENCLOSED IN PARENTHESIS ARE REFERENCE DIMENSIONS, THIS IS AUXILIARY INFORMATION AND DOES NOT GOVERN PRODUCTION OR INSPECTION OPERATIONS.
 - WORKING PRESSURE: -11.6 TO 217.56 PSI (-0.8 TO 15 BAR)
 - WORKING TEMPERATURE: 14 TO 140°F (-10 TO 60°C)
 - MATERIAL: BRASS
 - FINISH: NICKEL PLATED

REVISION HISTORY				
REV	RAD	DESCRIPTION	DATE	APPROVED
A	-	INITIAL RELEASE	7/9/2024	MV



UNLESS OTHERWISE SPECIFIED DIMENSIONS ARE IN MILLIMETERS INTERPRET DIMENSIONS AND TOLERANCES PER ASME Y14.5-2018		AUTHOR Esteban.Loera	DATE 7/9/2024	<div></div> <div>1401 W STANFORD AVE ENGLEWOOD, CO 80110 P: (800) 442-7628 F: (303) 781-2683 E: info@garmat.com</div>	
		CHECKED BY MV	DATE 9/16/2024		
		ENG APPROVAL MV	DATE 9/16/2024		
		MFG APPROVAL	DATE		
THIRD ANGLE PROJECTION				DESCRIPTION FITTING, STRAIGHT, UNION, PUSH-IN, 1/4" TUBE OD, BRASS, NICKEL PLATED	
<div></div>				SIZE C	DWG NO 2-FTG-STR-UN-.25PI
				SCALE 5 : 1	WEIGHT 0.014 kg
				SHEET	1 of 1
				REV A	