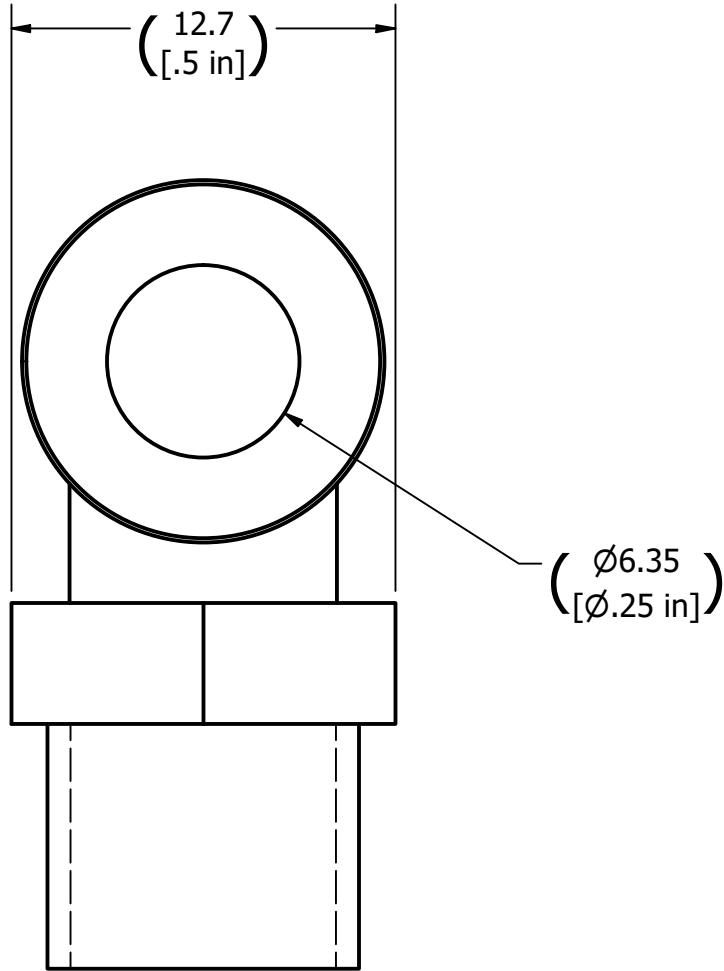
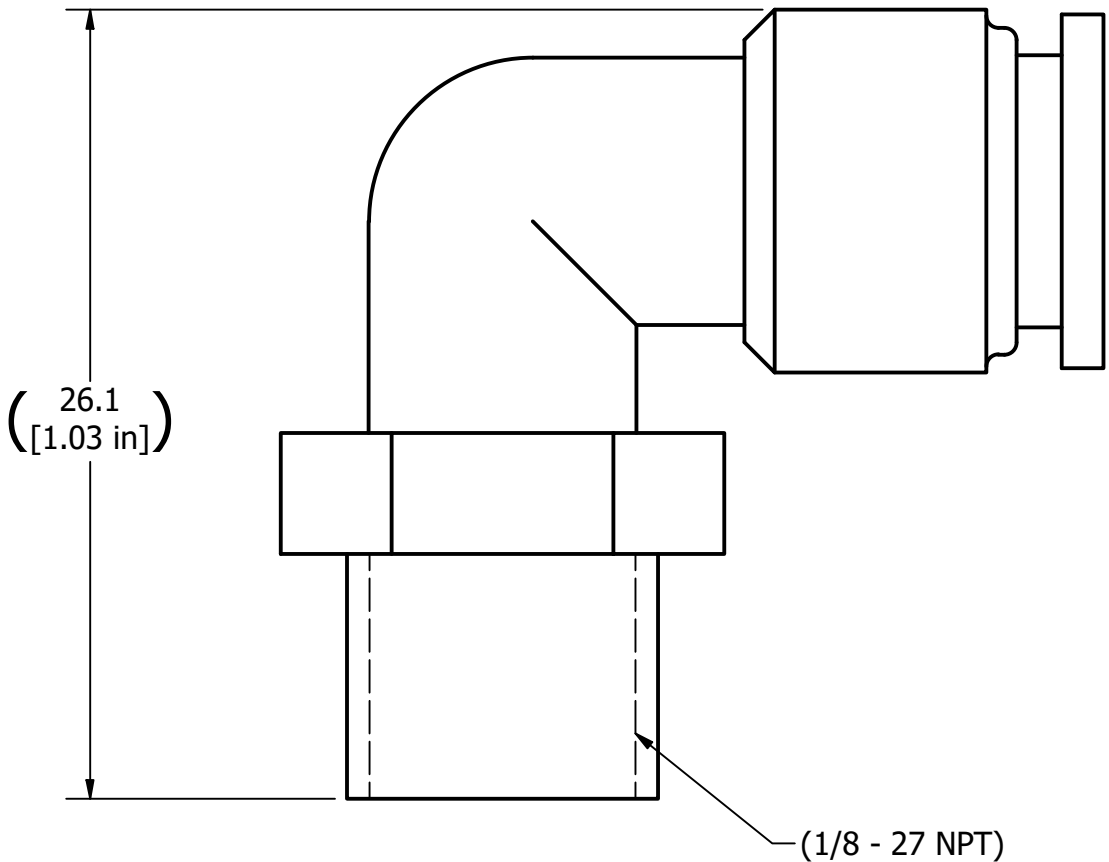
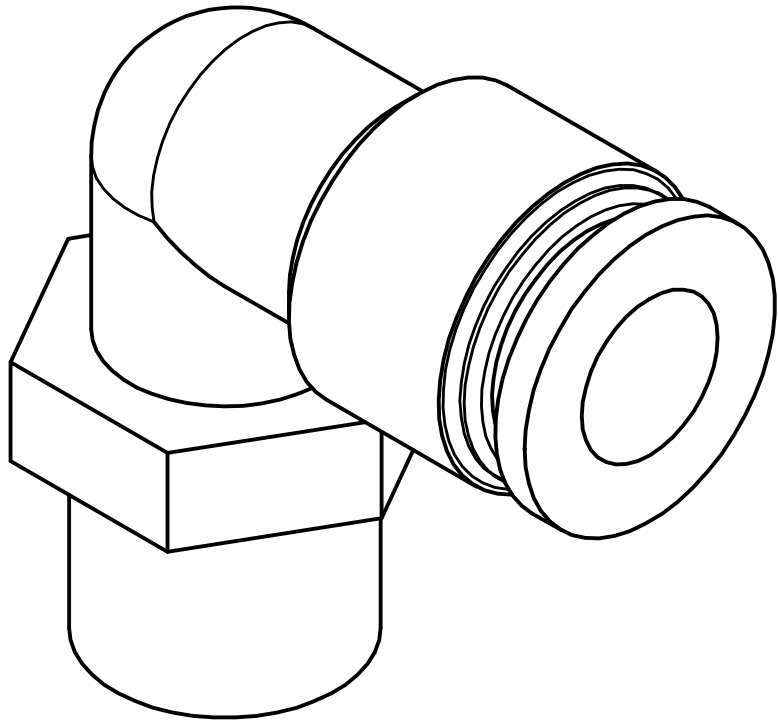
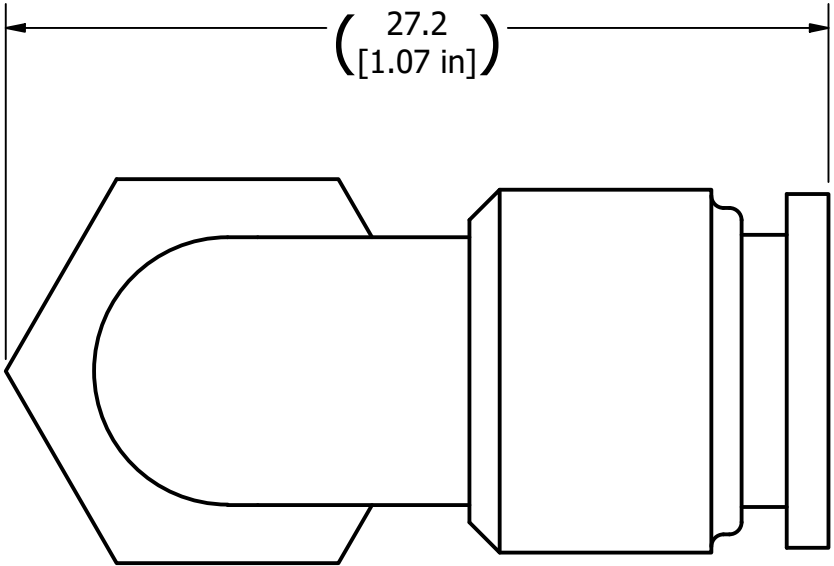

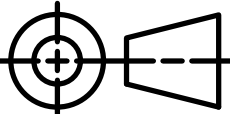


- NOTES:
- DIMENSIONS ENCLOSED IN PARENTHESIS ARE REFERENCE DIMENSIONS, THIS IS AUXILIARY INFORMATION AND DOES NOT GOVERN PRODUCTION OR INSPECTION OPERATIONS.
  - WORKING PRESSURE: -11.6 TO 217.56 PSI (-0.8 TO 15 BAR)
  - WORKING TEMPERATURE: 14 TO 140°F (-10 TO 60°C)
  - MATERIAL: BRASS
  - FINISH: NICKEL PLATED



REVISION HISTORY				
REV	RAD	DESCRIPTION	DATE	APPROVED
A	-	INITIAL RELEASE	6/24/2024	MV

UNLESS OTHERWISE SPECIFIED DIMENSIONS ARE IN MILLIMETERS INTERPRET DIMENSIONS AND TOLERANCES PER ASME Y14.5-2018		AUTHOR Estepan.Loera	DATE 6/24/2024	 <div>1401 W STANFORD AVE ENGLEWOOD, CO 80110 P: (800) 442-7628 F: (303) 781-2683 E: info@garmat.com</div>	
		CHECKED BY MV	DATE 9/16/2024		
		ENG APPROVAL MV	DATE 9/16/2024	DESCRIPTION  FITTING, ELBOW, SWIVEL, PUSH-IN X MNPT, 1/4" TUBE OD X 1/8", BRASS, NICKEL PLATED	
		MFG APPROVAL	DATE		
THIRD ANGLE PROJECTION				SIZE C	DWG NO 2-FTG-ELB-SWV-.25PI-.125MNPT
				SCALE 4 : 1	WEIGHT 0.017 kg
				SHEET	1 of 1
				REV A	